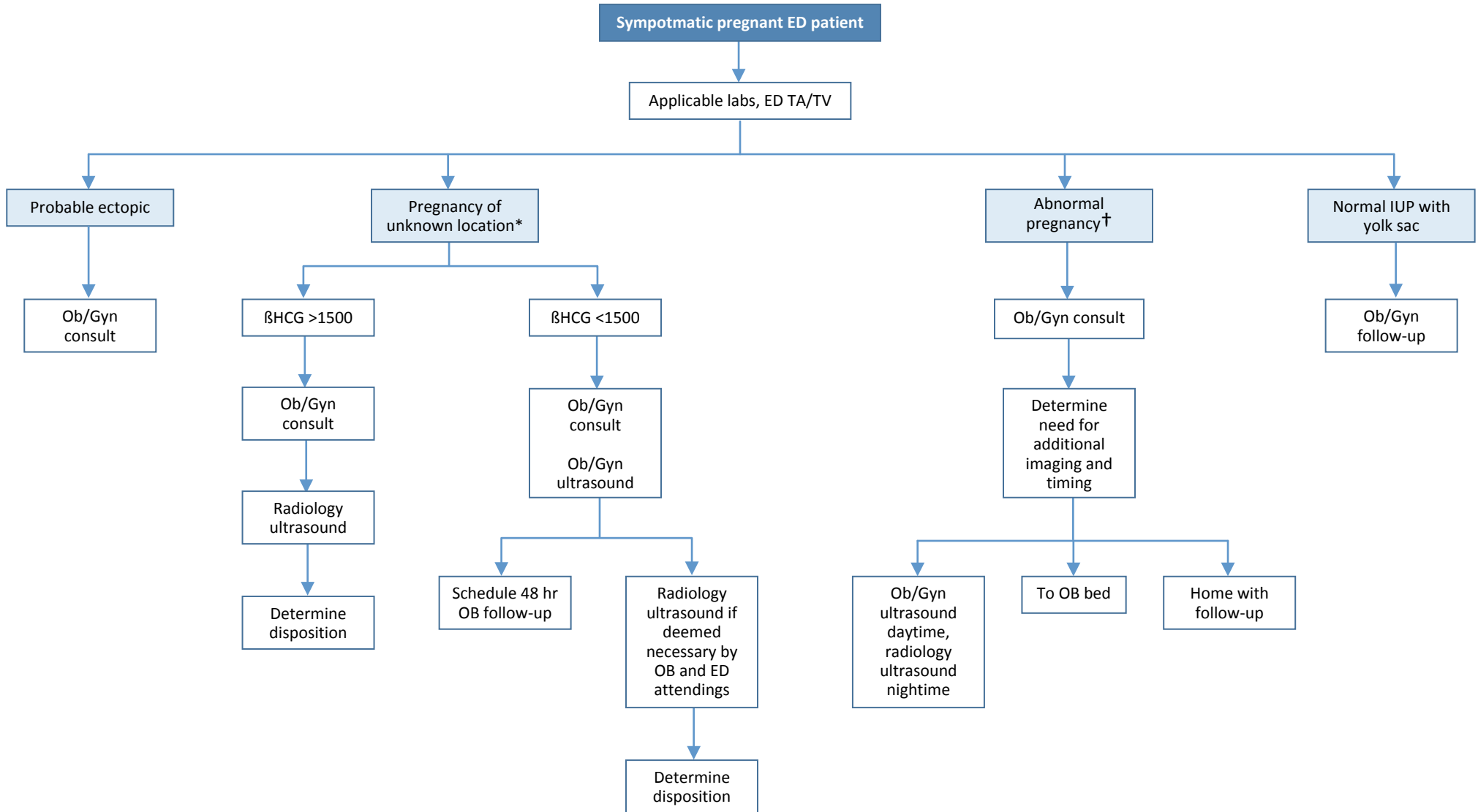


# Pregnancy Ultrasound Protocol



- ED will transfer images to Epic at time of consult.
- ED resident/attending will speak to radiology attending to initiate call-in.
- Consultants (OB/gyn or radiology) will document in the chart if reviewing ED images.

\* Concern for cervical ectopic, interstitial ectopic, marginal pregnancy, heterotopic pregnancy, pregnancy with abnormal uterine anatomy  
 † fetal demise, subchorionic hemorrhage intramural hematoma, cervical funneling, molar pregnancy, etc