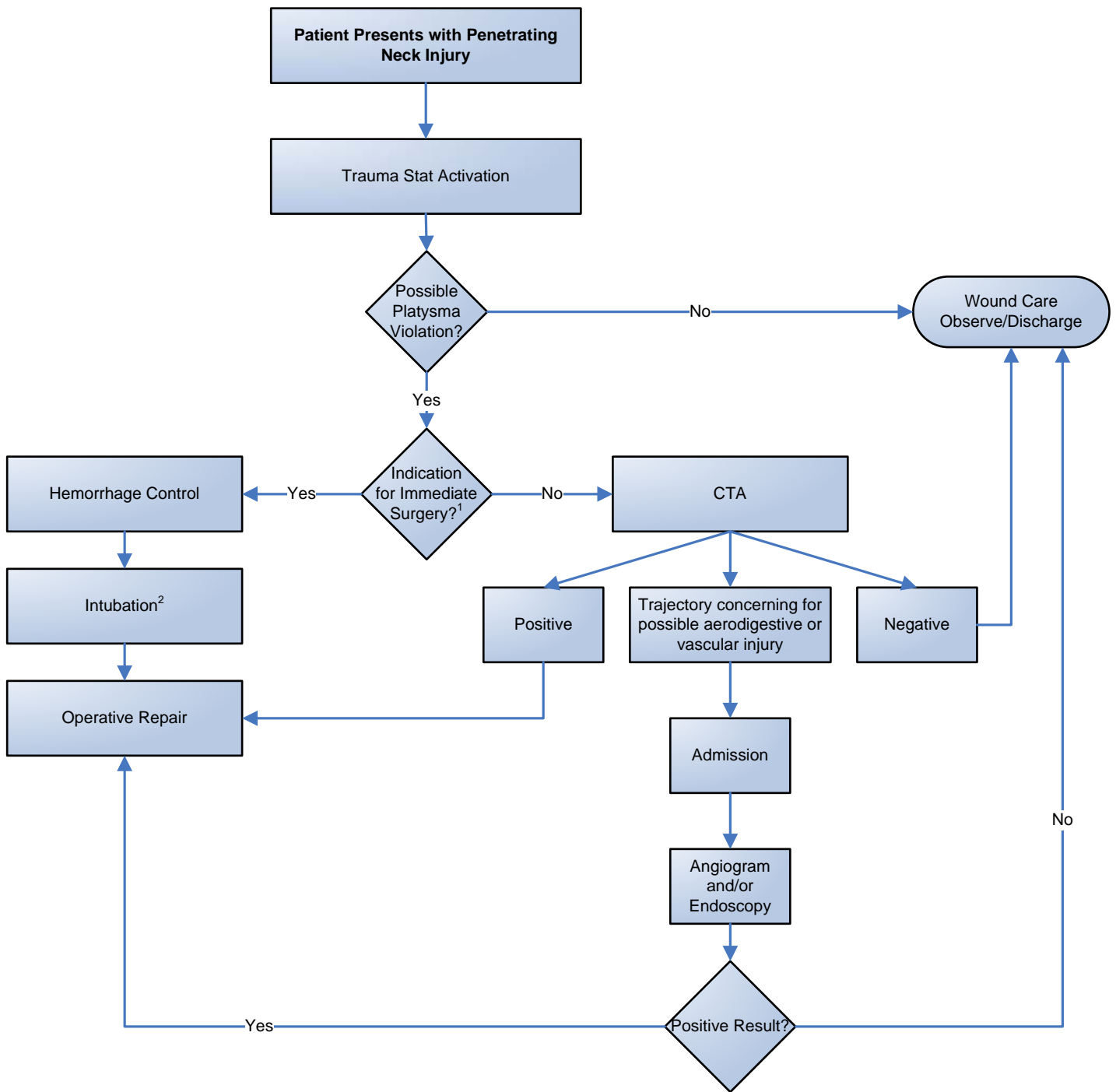


EmergencyKT: Penetrating Neck Injury



1) Criteria for Immediate Surgery

- Shock
- Pulsatile Bleeding
- Hematoma +/- Tracheal Shift
- Pulse deficit
- Audible Bruit
- Airway Compromise
- Acute Respiratory Distress
- Subcutaneous Emphysema
- Stridor, Hoarseness
- AMS
- Stroke

2) Airway Management

- Difficult airway, but likely RSI
- Avoid blind intubation
- Cricothyrotomy through hematoma discouraged
- Tracheostomy may be preferable

Notes on Cervical Spine Immobilization

- Only if does not impede evaluation and hemorrhage control
- Only for new neurological deficit