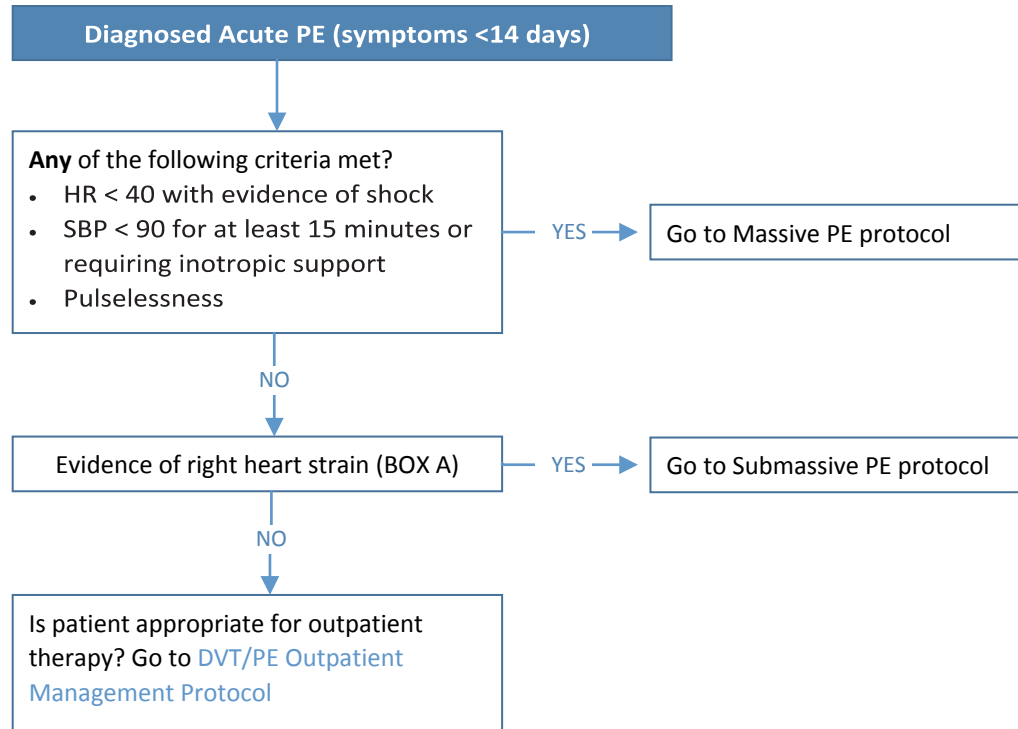
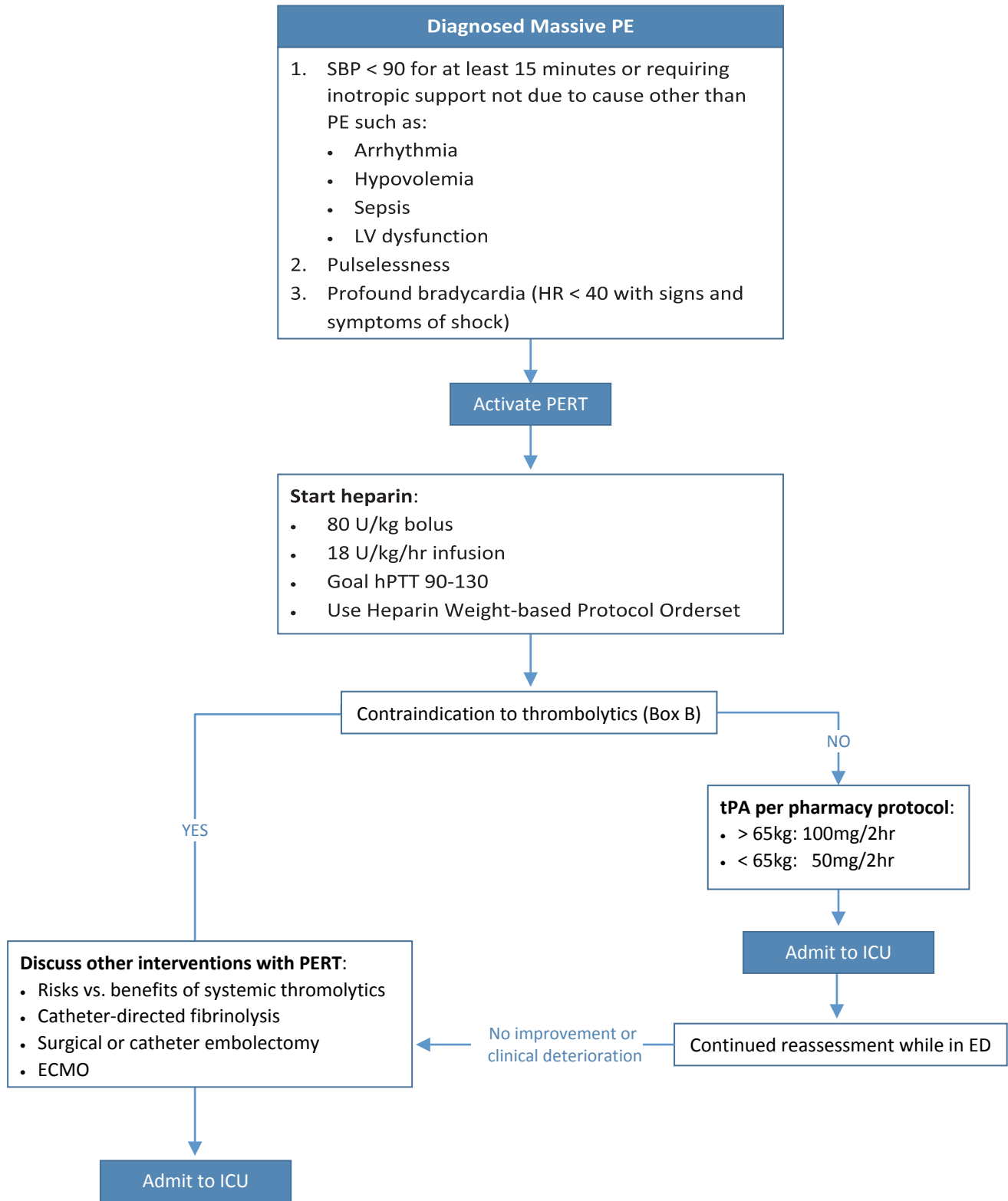


## Acute PE Protocol



BOX A
<ul style="list-style-type: none"><li>• RV dilation or RV dysfunction on echo</li><li>• RV dilation on CT</li><li>• BNP &gt; 90 pg/mL</li><li>• NTproBNP &gt; 500 pg/mL</li><li>• New complete or incomplete RBBB</li><li>• Anteroseptal ST elevation or depression</li><li>• Anteroseptal T wave inversion</li><li>• Troponin I &gt; 0.4 ng/mL</li><li>• Troponin T &gt; 0.1 ng/mL</li></ul>

# Massive PE Protocol



**BOX B: Contraindications to tPA (from ACC/AHA guidelines)**

- Any prior ICH
- Known intracranial cerebrovascular disease (i.e. AVM)
- Known malignant intracranial neoplasm
- Ischemic stroke within 3 months
- Suspected aortic dissection
- Recent surgery on spinal cord or brain
- Active bleeding or bleeding diastheses
- Recent closed head/facial trauma w/ radiographic injury of bony fractures or brain injury

# Submassive PE Protocol

