

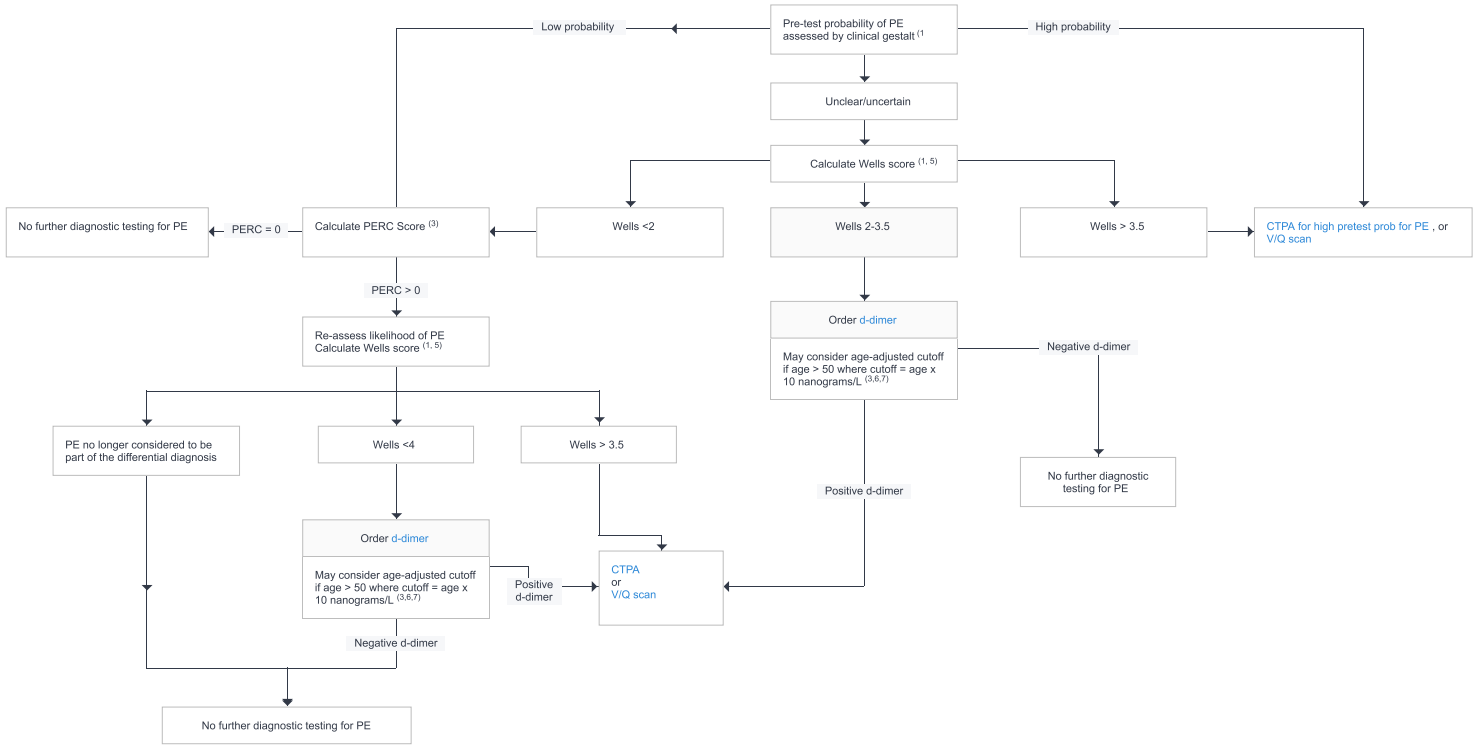
Initial orders

- CBC with diff
- Basic metabolic panel
- BNP
- Troponin

ECG orders

- HCG qualitative (serum or urine)
- XR Chest (PA/Lat or portable)

Pulmonary Embolism Diagnostic Algorithm



References

1. Penalzoza A, Verschuren F, Meyer G, et al. Comparison of the Unstructured Clinician Gestalt, the Wells Score, and the Revised Geneva Score to Estimate Pretest Probability for Suspected Pulmonary Embolism. *Annals of Emergency Medicine* 2013;62(2):117-124.e2.
2. MD JAK, BS WBS. Clinician Gestalt Estimate of Pretest Probability for Acute Coronary Syndrome and Pulmonary Embolism in Patients With Chest Pain and Dyspnea. *Annals of Emergency Medicine* 2014;63(3):275-80.
3. 2014 ESC Guidelines on the diagnosis and management of acute pulmonary embolism. *Eur Heart J* 2014;35(43):3033-73.
4. Freund Y, Cachanado M, Aubry A, et al. Effect of the Pulmonary Embolism Rule-Out Criteria on Subsequent Thromboembolic Events Among Low-Risk Emergency Department Patients. *JAMA* 2018;319(6):559-8.
5. Ma Y, Huang J, Wang Y, et al. Comparison of the Wells score with the revised Geneva score for assessing pretest probability of pulmonary embolism in hospitalized elderly patients. *European Journal of Internal Medicine* 2016;36(C):e18-5.
6. Righini, Marc, et al. "Age-adjusted D-dimer cutoff levels to rule out pulmonary embolism: the ADJUST-PE study." *JAMA* 311;11 (2014): 1117-1124.
7. American College of Emergency Physicians - Pulmonary Embolism (Suspected-Adult), www.acep.org/MobileArticle.aspx?id=80332&coll_id=618&parentid=740.
8. Douma, Renée A., et al. "Potential of an age adjusted D-dimer cut-off value to improve the exclusion of pulmonary embolism in older patients: a retrospective analysis of three large cohorts." *BMJ* 340 (2010): c1475.
9. Penalzoza, Andrea, et al. "Performance of age-adjusted D-dimer cut-off to rule out pulmonary embolism." *Journal of Thrombosis and Haemostasis* 10.7 (2012): 1291-1296.
10. Schouten, Henrike J., et al. "Diagnostic accuracy of conventional or age adjusted D-dimer cut-off values in older patients with suspected venous thromboembolism: systematic review and meta-analysis." *BMJ* 346 (2013): f2492

Most recent update: 12.22/2019

Department(s): Emergency Medicine