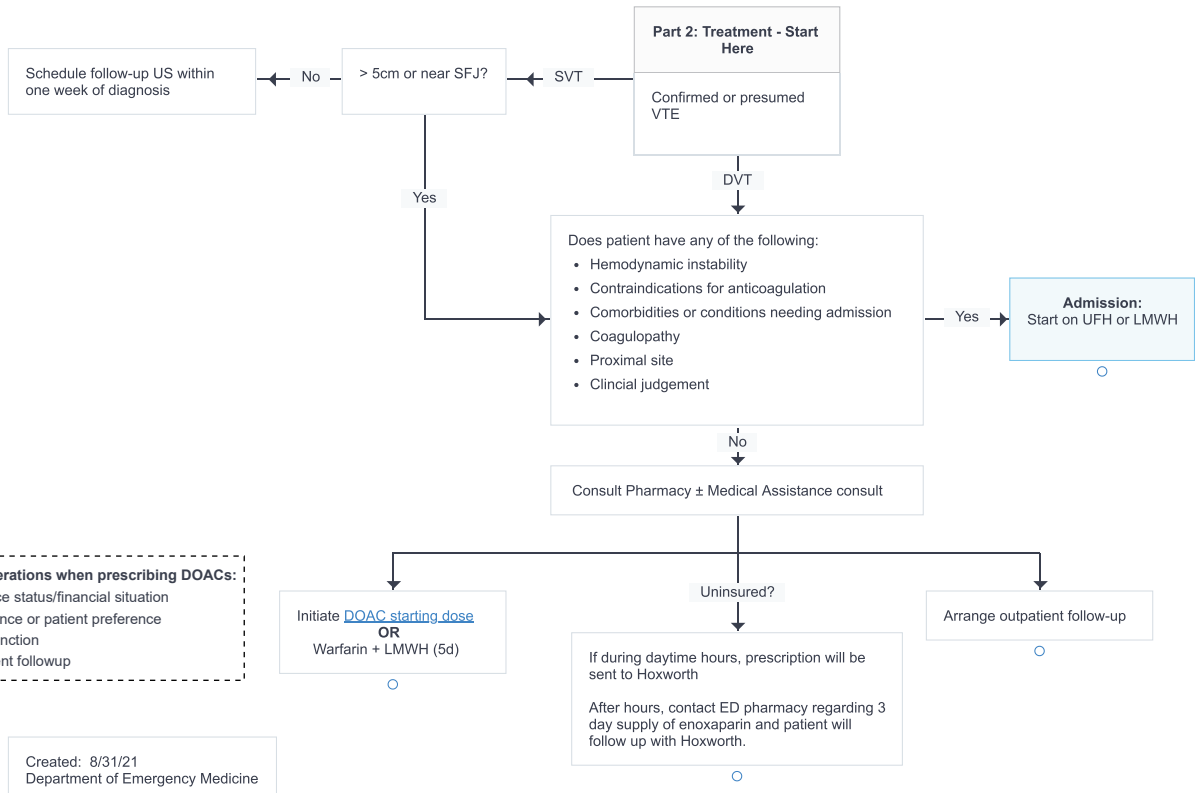
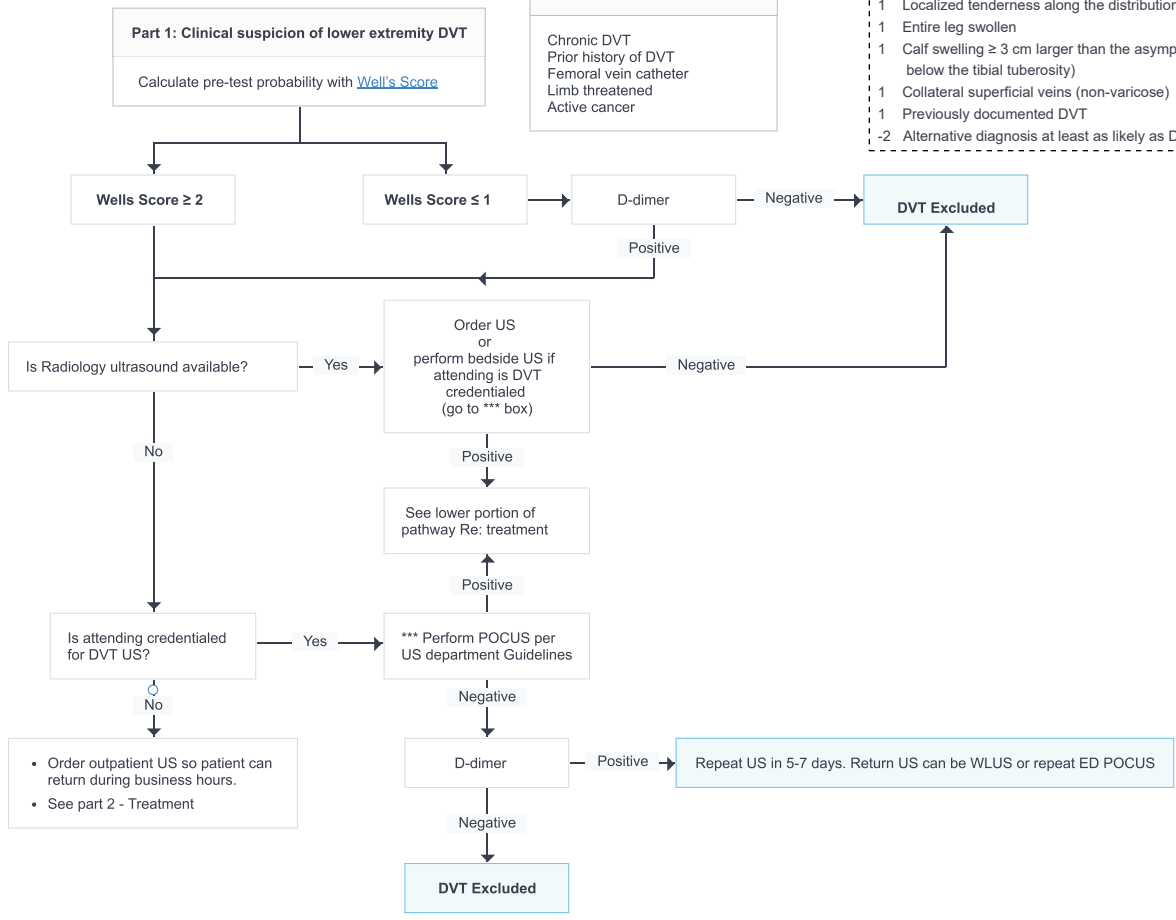


**Well's Criteria Scoring**

- 1 Paralysis, paresis, or recent plaster immobilization of lower limb
- 1 Recently bedridden  $\geq$  3 days or major surgery within previous 12 weeks
- 1 Localized tenderness along the distribution of deep venous system
- 1 Entire leg swollen
- 1 Calf swelling  $\geq$  3 cm larger than the asymptomatic leg (measured 10 cm below the tibial tuberosity)
- 1 Collateral superficial veins (non-varicose)
- 1 Previously documented DVT
- 2 Alternative diagnosis at least as likely as DVT

Do not use this pathway if:  
Chronic DVT  
Prior history of DVT  
Femoral vein catheter  
Limb threatened  
Active cancer



**Considerations when prescribing DOACs:**

- Insurance status/financial situation
- Compliance or patient preference
- Renal function
- Outpatient followup